

Affordability, Efficiency & Durability

FUSED INTO ONE

A STRAIGHTFORWARD HEATING SOLUTION!



- ▶ An Energy Efficient Radiant Heating System That Saves Fuel, Reduces Maintenance & Permits Higher Mounting.
- ▶ Fully Enclosed Reflector Directs The Heat To The Floor For Improved Performance.
- ▶ Calorized Aluminized Steel Emitter Tubes For Corrosion Resistance And Greater Radiant Output.
- ▶ Unique Diagnostic Monitoring Lights Show When Heater Is Operating, And Assists With Fault Diagnosis.
- ▶ Ceiling Stays Cool – No Need For Insulated Board Above Heater.**
- ▶ CSA Certified With Thermal Efficiency Above 70% & Low Exhaust Temperatures.

**Our Angle Is On
Performance And Quality**

**BOTH
SINGLE AND
2-STAGE
MODELS
AVAILABLE**

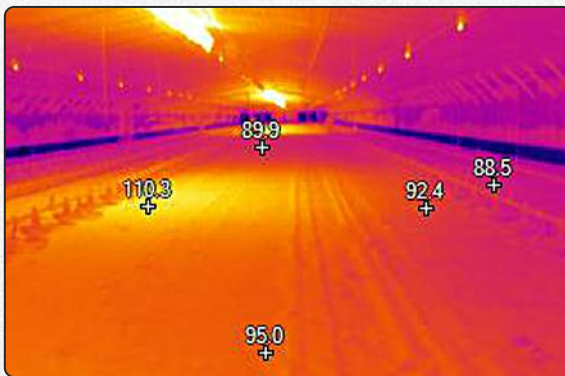
INTRODUCING

FUSION™

RADIANT POULTRY BROODER

Space-Ray's new FUSION™ delivers a large, wide rectangular heat pattern at litter level. Better brood conditions mean more comfort for your birds.

Infrared Photography Shows FUSION's Even Temperature Distribution At Litter Level



Unique design produces a large, rectangular heat pattern



Wide heat pattern keeps water and food areas warm for easy access

Powerful And Fuel Efficient Radiant Heat

Space-Ray Radiant Gas Tube Heaters operate using the same principle as the sun. Before heating the air, radiant warmth is delivered directly to the birds and litter area where it's needed most. Key features include:

- ▶ Superb Radiant Throw And Even Temperature Distribution.
- ▶ CSA Design Certified For Safety.
- ▶ Stainless Steel Wash-Down Rated Model Available.
- ▶ 4" Diameter Tubes Create A Large Radiant Surface To Emit More Heat Over A Wide Rectangular Area.
- ▶ Each Unit Comes With Fresh Air Intake Kit, Exhaust Hood, Stainless Steel Flexible Gas Connector And A Pre-Wired Electrical Connection.
- ▶ 3-Year Limited Warranty On Complete Emitter Assembly.
- ▶ Tube Integrity Shut-off System (TISS™).

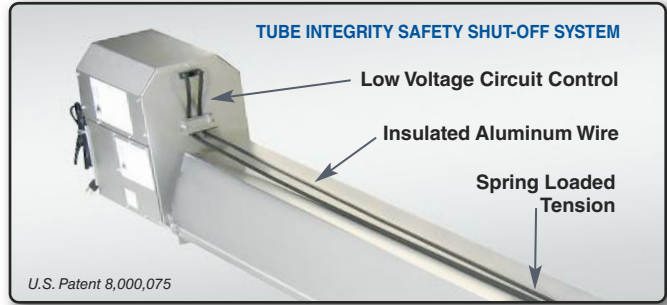
** Provided minimum clearances-to-combustibles are maintained.



FUSION TECHNICAL DATA

Patented TISS™ Tube Integrity Safety Shut-Off System

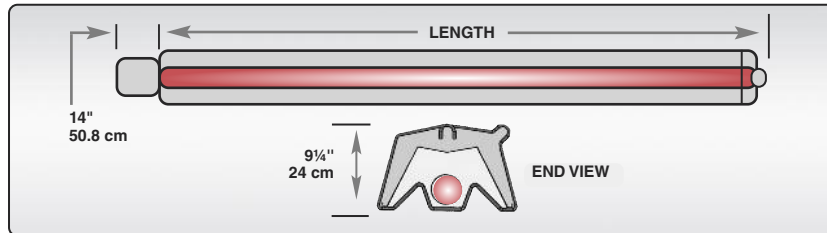
Space-Ray's patented innovative safety feature for positive pressure radiant tube heaters is called the "Tube Integrity Safety System" (TISS™). In the unlikely event of a tube failure, TISS™ has been designed to automatically shut off the heater. You may never know it is there, but it provides peace of mind.



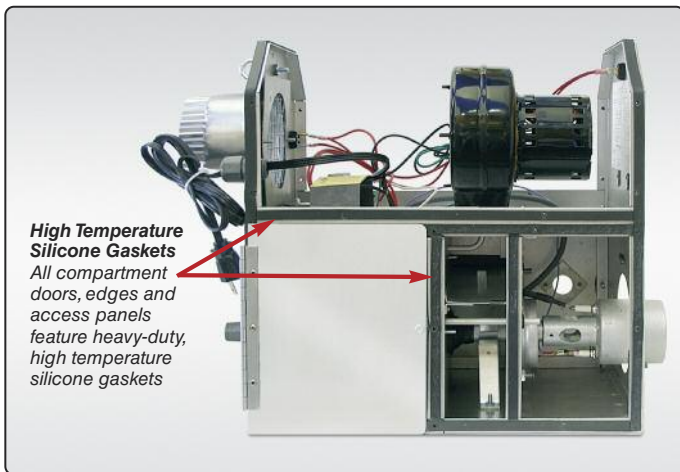
MODELS	SINGLE STAGE BTU/HR (Kw) INPUT	TWO STAGE		TOTAL EMITTER TUBE LENGTH	
		BTU/HR (Kw) HIGH INPUT	BTU/HR (Kw) LOW INPUT	15 FT	20 FT
FUS 60	60,000 (17.6Kw)	60,000 (17.6Kw)	40,000 (11.7Kw)	●	●
FUS 70	70,000 (20.5Kw)	70,000 (20.5Kw)	45,000 (13.2Kw)	●	●
FUS 80	80,000 (23.4Kw)	80,000 (23.4Kw)	55,000 (16.1Kw)		●

GAS TYPE	CONTROL OPTION		BURNER PRESSURE	SUPPLY PRESSURE		VOLTAGE	AMPS	IGNITION TYPE
	SINGLE STAGE	TWO STAGE		MIN	MAX			
NATURAL	N5	N7	3.5" W.C. 8.7 mbar	5" W.C. 12.5 mbar	14" W.C. 34.9 mbar	120 VAC 60 HZ	1.8	DIRECT SPARK
PROPANE	L5	L7	10" W.C. 24.9 mbar	11" W.C. 27.4 mbar	14" W.C. 34.9 mbar			

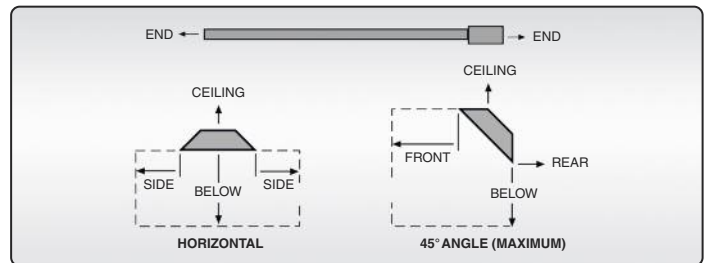
Note: For all installations higher than 2000 ft. above sea level, consult the factory for recommended derating of heaters.



BURNER BOX



MINIMUM CLEARANCE TO COMBUSTIBLES



MODEL NO.	SIDE	CEILING*	BELOW	END
FUS 60	36" / 91cm	12" / 30cm	69" / 175cm	32" / 81cm
FUS 70	36" / 91cm	12" / 30cm	69" / 175cm	32" / 81cm
FUS 80	36" / 91cm	12" / 30cm	69" / 175cm	32" / 81cm

*When used in a vented mode, clearance to the ceiling from top of the reflector may be reduced to 6" (15 cm) on all models. If optional corner or U-Bend reflectors are not used, clearance must be 18" (46.7 cm) to center. Note: Consult factory if reduced clearances are required.

For Your Safety

OPERATE SPACE-RAY GAS INFRARED HEATERS WITH PROPER CARE AND OBSERVE ALL SAFETY PRECAUTIONS. Installation and service must be performed by a licensed contractor. The installation must conform to Manufacturer's Installation and Operating Instructions or local codes. In the absence of local codes, the installation must conform to the National Fuel Gas Code ANSI Z223.1 (latest edition, also known as NFPA54) or CAN / CSA-B149 installation codes (latest edition).



SPACE-RAY® Since 1949

A Division of Gas-Fired Products, Inc.
305 Doggett St. PO Box 36485, Charlotte, NC 28236
Toll Free 1-800-849-7311 (704)372-3488 Fax (704)332-5843
Email: info@spaceray.com Web: www.spaceray.com
Plants in Charlotte, NC and Ipswich, England



DISTRIBUTED BY _____