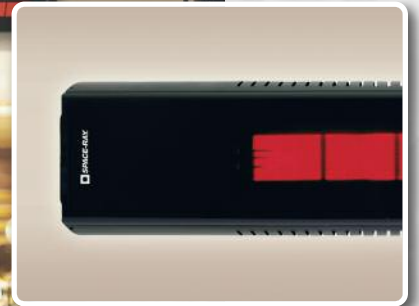


The Wind Blocker™ WB SERIES

Infrared Patio Heaters For **Restaurants & Patios**

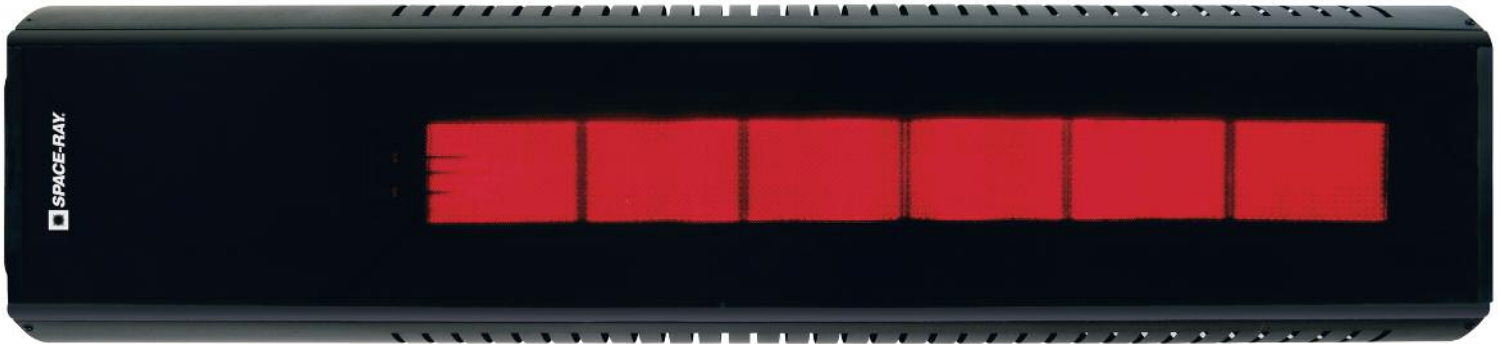




Wind Blocker™ Tinted Ceramic Glass Series Infrared Patio Heater

Wind & Rain Resistant

GLASS SURFACE PROTECTS FROM WIND & RAIN WITHSTANDS UP TO 40 MPH WIND RESISTANCE SINGLE OR TWO STAGE OPERATION

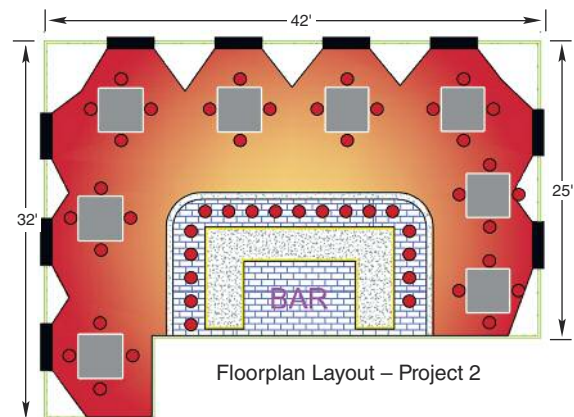
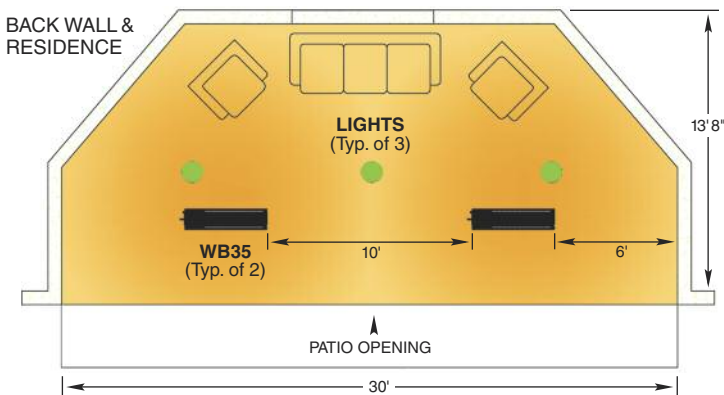


ANGLE MOUNT FROM HORIZONTAL TO 60° FIXED INSTALLATION FOR USE WITH NATURAL OR LP GAS AESTHETIC DESIGN

Extend The Outdoor Heating Season

- The new Space-Ray Wind Blocker™ Tinted Ceramic Glass Series patio heaters are the perfect solution to extend the outdoor season by providing the warmth of radiant heat.
- Provides a level of comfort for your outdoor dining and entertainment areas. Perfect for other partially covered outdoor environments like patios, bars and smoking areas.
- Increases available outdoor restaurant seating capacity and revenue. For consumers it extends the outdoor season, permitting enjoyment of the outdoor space.
- Using the same principle as the sun, radiant warmth from Space-Ray's Wind Blocker Series is delivered directly to people at floor level first, before heating the surrounding air. This provides a comfortable envelope of warmth in seating areas below.
- Designed with high temperature tinted glass which provides additional protection on windy days and enhances the heater's aesthetic appeal – unlike typical infrared patio heaters which are affected by the adverse effects of the wind and weather conditions, often resulting in flame lift-off – called *heat rollout* – and reduced efficiency in windy conditions.
- Tinted ceramic glass provides cover for burner, protecting it from the wind and permitting consistent heat output.
- No flame lift off (heat rollout).
- Clearances above can be as low as 10" with optional shield.
- Can be suspended from ceiling or angle mounted from column or sidewall with optional mounting brackets.
- 3 mil hi-temp silicone powder coated paint for durability.
- Covers 12' x 12' area with minimal wind conditions.
- Factory shipped as a two stage control heater and can be used with optional 3 position switch for ultimate comfort. Operate at first stage (24,000 Btu/hr) during milder days and operated at full power (35,000 Btu/hr) on colder days.
- Can be operated at full power (35,000 Btu/hr) as a single stage heater by a simple factory supplied jumper wire.

Residential Patio, Top View – Project 1

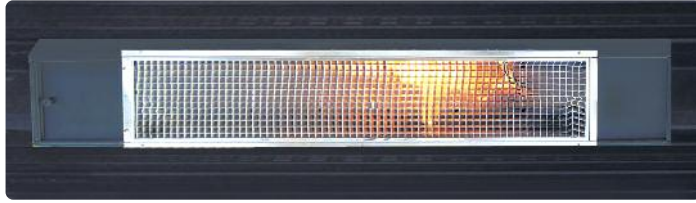


Infrared Patio Heater Comparisons

Competitive Models vs. Space-Ray's Wind Blocker™ Tinted Ceramic Glass Series

ADVERSE WIND RESISTANCE

Typical Competitive Model



Space-Ray Wind Blocker Series



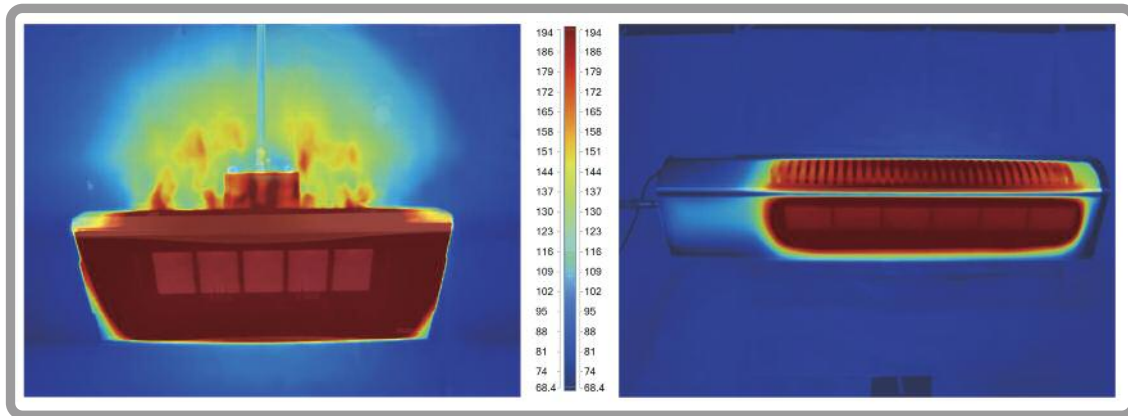
Both heaters shown above were installed horizontally – photos were taken looking straight up from floor level.

Installation photographs demonstrate how adverse wind conditions can affect performance of infrared heaters.

On typical competitive models (above left) the flame exits the burner, which can eventually melt the protective grill. The Space-Ray Wind Blocker Series (above right) features a totally enclosed burner preventing heat rollout during harsh wind conditions.

- ▶ The Wind Blocker with tinted ceramic glass can operate in winds up to 40 MPH without any adverse wind affects. The glass front protects the burner and improves burner performance resulting in higher efficiency.

HEAT ROLLOUT – INFRARED PHOTOGRAPHY



Leading Competitive Model

The leading competitive model (above left) can only be installed at a 58° angle limiting installation flexibility. Photo shows that flames are not totally enclosed – evident in darker environments. Exposed flame outside the heater is not desirable and can be a potential safety issue if the heater is mounted too close to combustible materials.

Space-Ray Wind Blocker Series

Shown above right, even when mounted at a 60° angle, the Wind Blocker Series burner flame is totally enclosed, a testament to Space-Ray's design and engineering expertise. No exposed flames outside the heater to worry about.

SPECIFICATIONS

MODEL	CONTROL OPTIONS	INPUT BTU/Hr		TYPICAL MOUNTING HEIGHT*		SPACING BETWEEN HEATERS	
		HIGH	LOW	HORIZ	ANGLE	HORIZ	ANGLE
WB35 -N7 or -L7**	Two Stage	35,000	24,000	8 – 11 ft.	7 – 9 ft.	8 – 16 ft.	6 – 14 ft.

*The suggested mounting heights and spacing are subject to site conditions. Heaters can be operated at excessive weather conditions. Excessive weather and high winds (15+ mph) can reduce the effectiveness of the heaters.

**Can be operated as a single stage heater with factory supplied jumper wire.

MODEL	GAS TYPE	BURNER PRESSURE	SUPPLY PRESSURE		VOLTAGE / AMPS IGNITION TYPE	SHIPPING WEIGHT
			MINIMUM	MAXIMUM		
WB35 -N7	Natural	6.0" w.c.	7" w.c.	14" w.c.	120VAC / 60 Hz .1Amp Direct Spark	55 lbs.
WB35 -L7	Propane	11" w.c.	11.5" w.c.			

OPTIONAL WB ACCESSORIES

Heat Shield



Overhead Clearance Reduction
Through use of the optional Heat Shield, clearances above the heater can be reduced for applications with tighter overhead space.

Wall Or Ceiling Mount



Optional Mounting Bracket
The adjustable mounting brackets allows wall mounted or ceiling suspended heater installations at varying angles.

WB CONTROL OPTIONS

Control Switch (N7 / L7)



Individual Or Zone Control
Heaters can be controlled individually or in zones using 3-position switch or a thermostat. This permits low fire on mild days or full power on cold days.

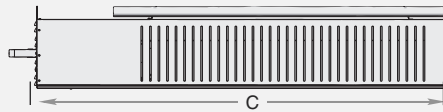
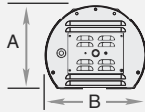
Wind Blocker™ Tinted Ceramic Glass Patio Heater Series

Engineering advanced gas heating products since 1949, Space Ray's new Wind Blocker™ stands out from other outdoor heating solutions. Technology ...Aesthetic Design ...Energy Efficiency. Space Ray doubles down on performance! Whether your installation is a restaurant, outdoor patio or other hard to heat location, Space Ray's new Wind Blocker™ offers an outstanding solution!

FEATURES

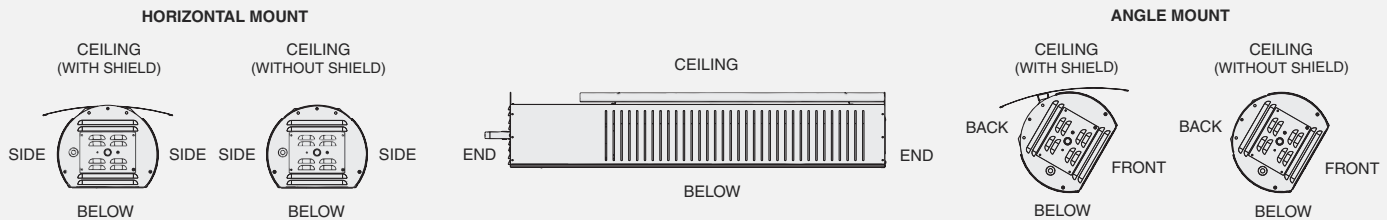
- High Efficiency Ceramic tiles that produce environmentally friendly emission levels below nationally recognized levels (as defined by California Energy Commission). NOx emission levels as low as 15 parts per million adjusted for 3% O₂.
- Indoor or Outdoor Rated. Can be exposed to outdoor elements – rain or snow.
- Wind resistance up to 40mph wind force. Tinted ceramic glass technology and Space-Ray's unparalleled burner design and operation leaves other competitive patio heaters behind.
- Extremely quiet operation. No blower or fan noise.
- Potted (Water Resistant) Direct Spark Ignition module for harsh environmental conditions.
- The ceramic tiles on the emitter are rotated horizontally to spread the comfort evenly and provide a soft red glow of infrared energy.
- The burner box is constructed with weather resistant, zinc plated materials with 3 mil black hi-temperature silicone powder coated paint.
- Specially designed internal reflectors enhance the radiant output and are totally hidden behind the tinted ceramic glass.
- Horizontal or angle mounting up to 60°. Can be suspended from ceiling or angle mounted from column or sidewall with optional adjustable mounting brackets.
- Can be installed with 45 or 60 degree angles at lower mounting heights (e.g., 7 ft.) to reduce intensity.
- Clearances as low as 10" above the heater with optional shield.
- 3-year limited warranty on the burner assembly, and 1-year limited warranty on the controls.
- CSA Design Certified – ANSI Z83.19 & ANSI Z83.26 Standard.
- Manufactured with pride in the USA.

Dimensions



A	B	C
9½"	11½"	48"

Minimum Clearances To Combustibles – Outdoor Installations**



MOUNTING ANGLE	CEILING	CEILING* WITH SHIELD	BACK	BACK* WITH SHIELD	SIDE	END	BELOW	FRONT
0°	20"	10"	–	–				
15° & 30°	23"	14"	12"	12"	24"	12"	40"	48"
45° & 60°	24"	17"						

* Installed with optional clearance shield to reduce ceiling and back clearances.

** Heaters can be installed Indoors. Indoor applications require higher clearances. Refer to I & Os for Indoor Clearances to Combustible Requirements.

Venting Requirements – Indoor Installations

In indoor and tightly sealed buildings this heater requires ventilation. An indirect vented installation requires a minimum ventilation flow of 4 CFM per 1000 BTU/hr of total installed heater capacity on natural gas by either gravity or power ventilation.

Installation Requirements

Installation and service must be performed by a licensed contractor. The installation must conform to manufacturer's installation and operating instructions and local codes. In the absence of local codes, the installation must conform with the National Fuel Gas code, ANSI Z223.1 (also known as NFPA54) or GCA B149 installation codes.

For Your Safety

Operate Wind Blocker infrared heaters with proper care and observe all safety precautions. Carefully follow printed installation, operating and cleaning instructions furnished with the heater. Do not store gasoline or combustible products in the vicinity of the heater. Keep children, clothes and drapery away from the heater. Do not touch the heater glass or the housing while the heater is in operation. Adequate ventilation must always be provided in accordance with national, state or local codes.



SPACE-RAY® Since 1949
INFRARED GAS HEATERS

A Division of Gas-Fired Products, Inc.

P.O. Box 36485 Charlotte, NC 28236 • Telephone (Toll Free) 1-800-438-4936 • (704)372-6391 • Fax (704)332-5843